

State of Wyoming Corner Record

(In compliance with the **CORNER PERPETUATION AND FILING ACT**, Wyoming Statutes, 1997 Section 33-29-140 et. seq., and the Rules and Regulations of the Board of Professional Engineers and Professional Land Surveyors)



RECORDED 6/06/2011 AT 9:38 AM REC# 569913 BK# 2222 PG# 1321
DEBRA K. LATHROP, CLERK OF LARAMIE COUNTY, WY PAGE 1 OF 1

Reverse side of this form may be used if more space is needed.

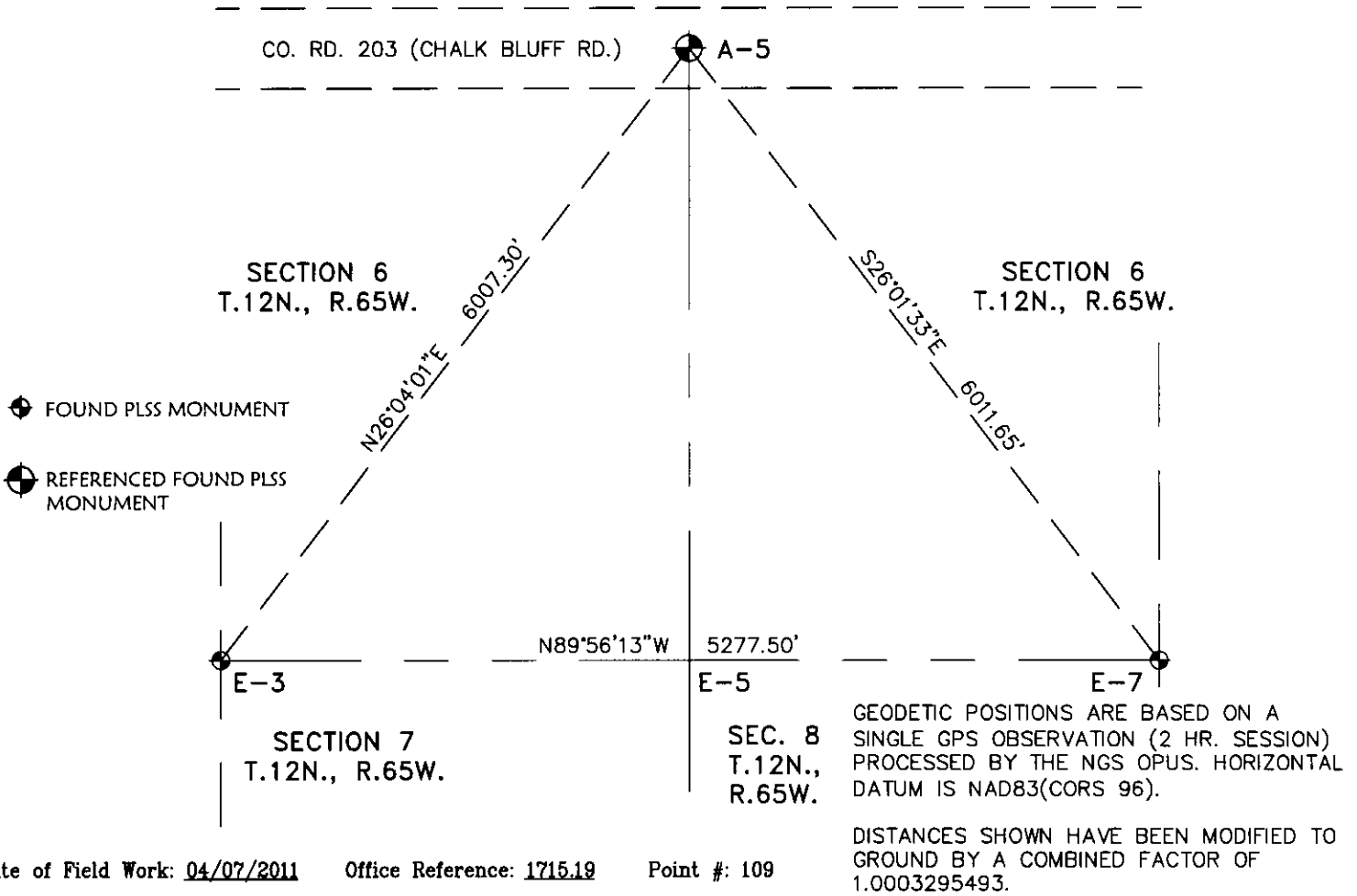
Record of original survey and citation of source of historical information (if corner is lost or obliterated). Description of corner monumentation evidence found and/or monument and accessories established to perpetuate the location of this corner. Sketch of relative location of monument, accessories, and reference points with course and distance to adjacent corner(s) (if determined in this survey). Method and rationale for reestablishment of lost or obliterated corner.

LOCATION: Section corner common to Sections 31 and 32, T13N, R65W and Sections 5 and 6, T12N, R65W, 6th P.M., Laramie County, Wyoming.

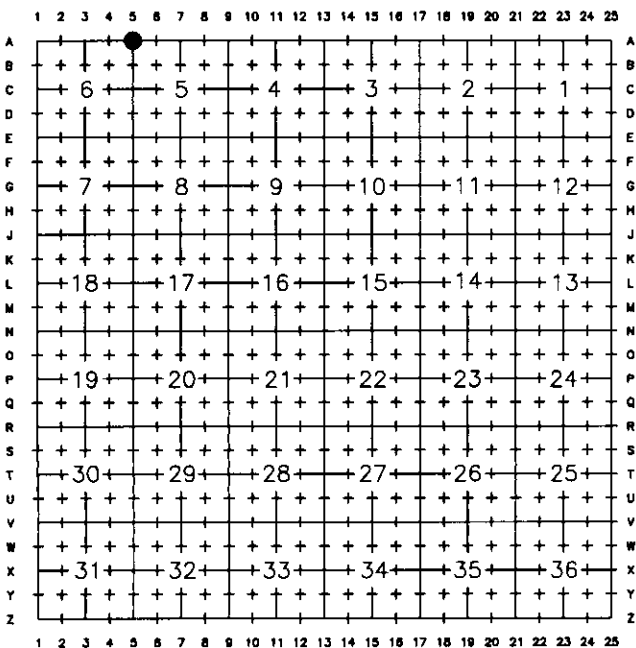
EVIDENCE FOUND: Found 8d spike in centerline of County Road 203 (Chalk Bluff Road).

MONUMENT & ACCESSORIES ESTABLISHED: Nothing established.

LAT / LONG: 41°02'38.062"N, 104°41'39.288"W (NAD 83/CORS 96)



Cross Index Plat

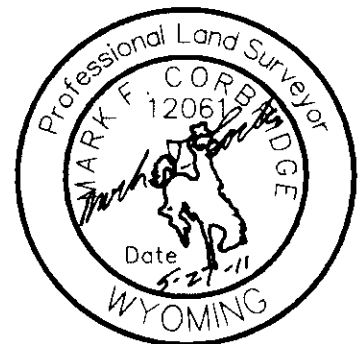


COFFEY

902 S. 3rd St., Laramie, WY 82070
307-742-7425 307-742-7403

This corner record was prepared by me or under my direction and supervision.

SEAL & SIGNATURE



Corner Name North East Corner Section 6, T 12 N, R 65 W, 6th P.M.

County: Laramie Wyoming

Cross-Index No.: A-5

SBRPEPLS/PLSW: March 1994; PLSW January 1998